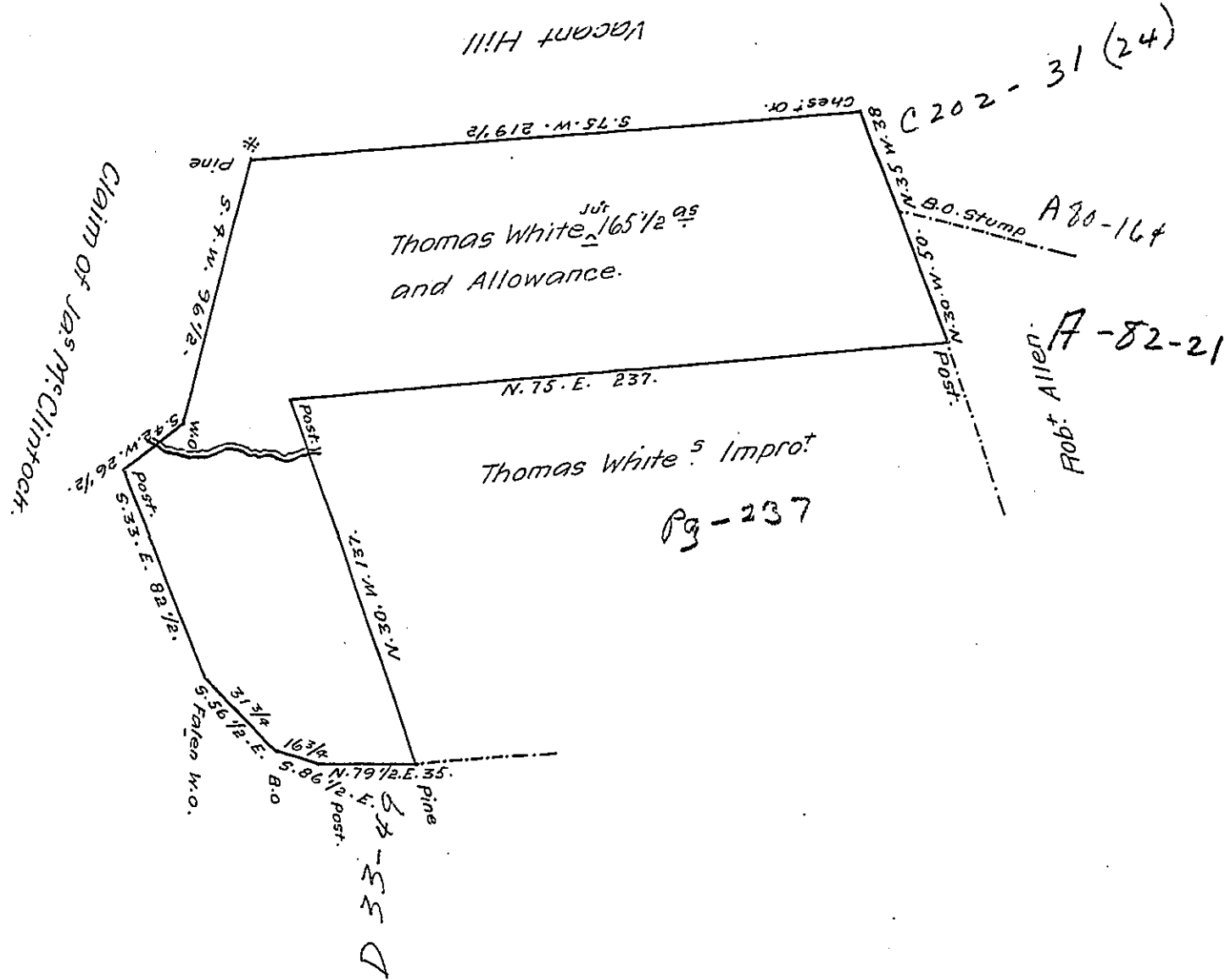


254 - 31



The Draught of a Tract of Land Situate in Fye Township Cumberland County Containing one Hundred and and Sixty five acres and an half and Allowance of Six per cent for Roads &c<sup>o</sup> Surveyed May 15<sup>th</sup> 1789 in pursuance of a Warrant granted to Thomas White, Junr Dated April 14<sup>th</sup> 1788.

P: Sam: Lyon. late: D. S.

To Samuel Cochran Esq<sup>r</sup>  
Surveyor General of Pennsylv<sup>a</sup>

IN TESTIMONY that the above is a copy of the original remaining on file in the Department of Internal Affairs of Pennsylvania, made conformably to an Act of Assembly approved the 16th day of February 1833, I have hereunto set my hand and caused the Seal of said Department to be affixed at Harrisburg, this first day of May 1907.

*Geo. A. Brown*  
Secretary of Internal Affairs.